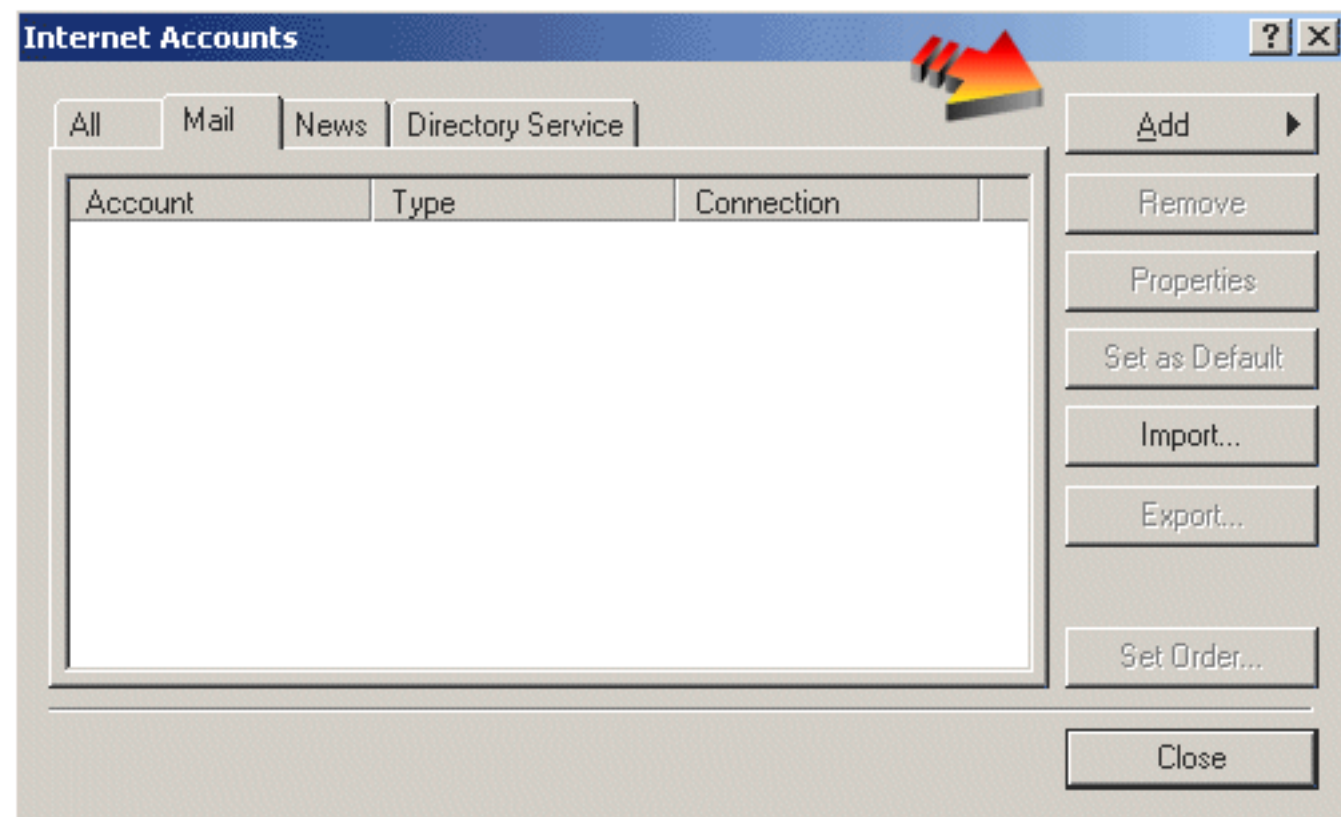


TOUCHSTONE HOSTING

How do I set up my pop email accounts with my email software?


With Outlook or Outlook express :

Go into Outlook --> Select TOOLS --> ACCOUNTS --> Your SetUp Wizard will look like that below.



ENTER your eMail address: anyone@YourDomainName.com

Internet Connection Wizard [X]

Internet E-mail Address 

Your e-mail address is the address other people use to send e-mail messages to you.

I already have an e-mail address that I'd like to use.

E-mail address:


For example: someone@microsoft.com

I'd like to sign up for a new account from:

< Back Next > Cancel

Incoming Mail Server Type: POP3
Incoming Mail Server: mail.YourDomainName.com
Outgoing Mail Server: mail.YourDomainName.com

Internet Connection Wizard [X]

E-mail Server Names 

My incoming mail server is a server.

Incoming mail (POP3, IMAP or HTTP) server:

An SMTP server is the server that is used for your outgoing e-mail.

Outgoing mail (SMTP) server:

Account Name: anyone@YourDomainName.com (You MUST use the whole email address)
Password: Your e-mail account's password.



Internet Mail Logon



Type the account name and password your Internet service provider has given you.

Account name:

Password:

Remember password

If your Internet service provider requires you to use Secure Password Authentication (SPA) to access your mail account, select the 'Log On Using Secure Password Authentication (SPA)' check box.

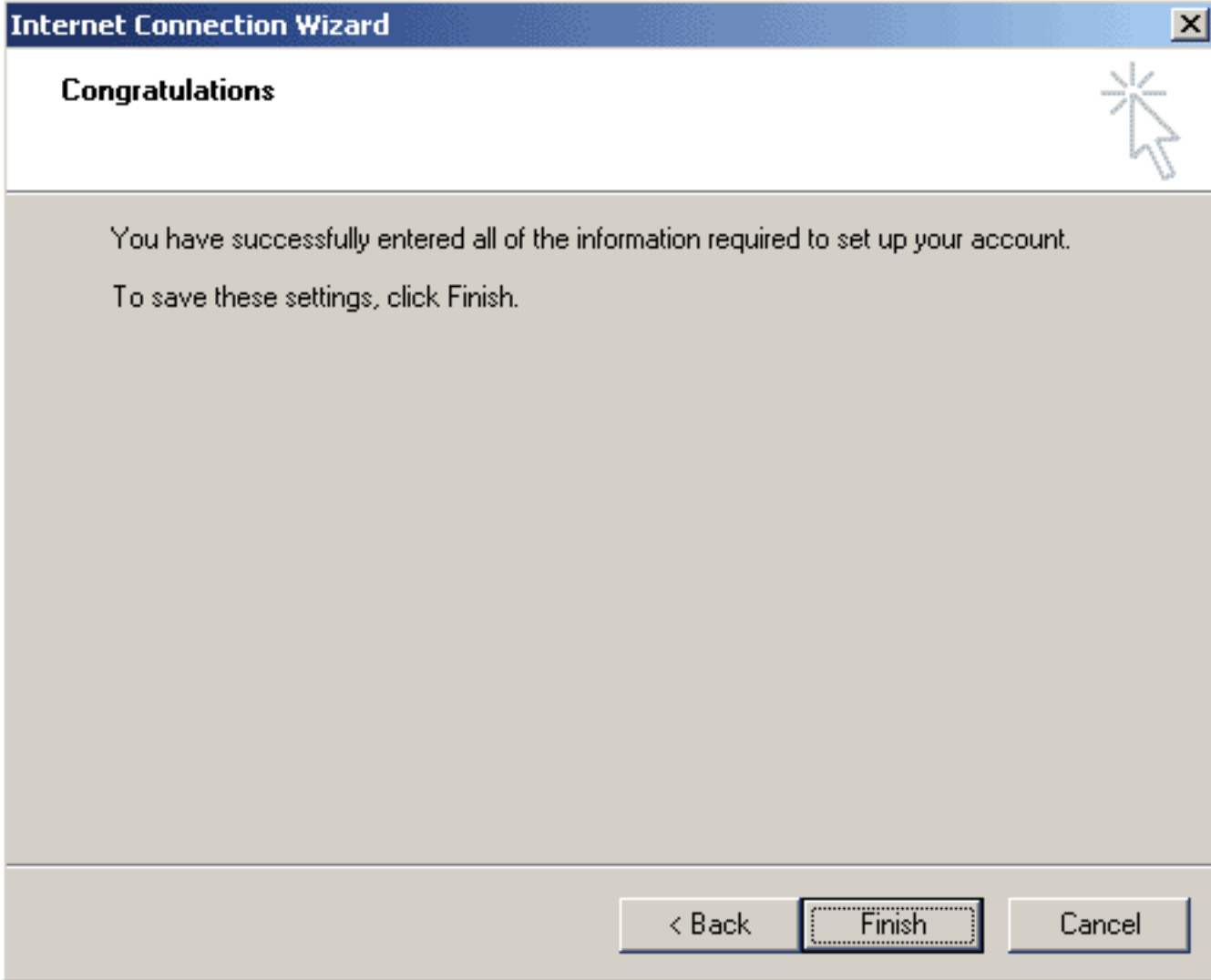
Log on using Secure Password Authentication (SPA)

< Back

Next >

Cancel

Almost Done



Now your email software is ready for you to RECEIVE emails.

Set up our Outgoing Mail

In order to send from your Outlook or Outlook Express you will need to go back into STEP 1 --> Select your email account --> Click Properties --> Click the SERVERS tab --> See the outgoing mail server section near the bottom of this window? MAKE SURE that the "Server requires Authentication" box IS CHECKED. If it's not you will not be able to send email!

Stuff:

We do have outgoing SMTP servers, however, we recommend that you use your dial up or network access for the smtp function of your e-mail program. The reason is simple - our servers run faster with less email being sent through them, and since you have an ISP to connect to the internet, you get an email account from them. But, for many of you, you have AOL, or another large supplier. These have different rules.

If you use AOL, you need to use mail.yourdomainname.com in your e-mail program when it asks for your SMTP (outgoing) mail server, and you must check off "My server requires Authentication." If it asks for your outgoing mail server username and password, this is the username and password for your actual hosting account - not your email account. If you use MSN, and several others, they will not allow you to use anything but them in that line (this is a security measure to prevent SPAM.)

If you have MSN, or another that gives you an error of: "Relay Denied", You must use YOUR dialup SMTP information, where you are asked for your outgoing SMTP account. You should obtain this information from your dialup Internet Service Provider.